



Baldwinsville

Central School District

Achieving our full potential together.

**2020-2021
CONTACT TRACING
PLAN**

***“Recovering
Rebuilding
Renewing”***

Baldwinsville CSD 2020-2021 School Re-Opening

Contact Tracing Plan

► Contact Tracing

The Baldwinsville Central School District cooperates with state and local health department contact tracing. We assist public health departments in knowing who may have had contact at school with a confirmed case by:

- Keeping accurate attendance records of students and staff members;
- Ensuring student schedules are up to date;
- Keeping a log of any visitors which includes date, time and where in the school they visited; and
- Assisting local health departments in tracing all contacts of the individual at school in accordance with the protocol, training, and tools provided through the New York State Contact Tracing Program.
- Maintaining confidentiality as required by federal and state laws and regulations.

Our school staff will not determine who is to be excluded from school based on contact without guidance and direction from the local department of health

The Baldwinsville Central School District collaborates with our local health department to determine the parameters, conditions or metrics (e.g., increased absenteeism or increased illness in the school community) that will serve as early warning signs that positive COVID-19 cases may be increasing beyond an acceptable level.

Baldwinsville Central School District administrators will consider closing school if absentee rates impact the ability of the school to operate safely. The Baldwinsville Central School District may choose to modify operations prior to closing to help mitigate a rise in cases. Baldwinsville Central School District will consult our medical director and/or the local department of health when making such decisions.

The Baldwinsville Central School District will provide documentation/information regarding student and/or staff contacts during the relevant time period, as requested by the DOH for contact tracing purposes. The DOH will determine who the proximate contacts are that need to be notified, quarantined and/or tested.

School Reopening COVID-19 Contact Tracing Protocol

** Effective August 10, 2020*

Once a lab confirmed case has been reported to the Onondaga County Health Department (OCHD):

- o A staff person (case investigator) from OCHD will contact the confirmed case and their parent/guardian in the case of a student.
- o The confirmed case is interviewed and contacts identified.
- o School personnel assist health department in identifying specifics pertaining to the exposure.
- o The confirmed case is out in isolation for 10 days.
- o Release from isolation can only be granted by OCHD.

Contact Tracer will interview all contacts:

- o All contacts of confirmed cases interviewed to determine exposure risk.
- o 14-day quarantine is issued by contact tracer for all close contacts of confirmed case.

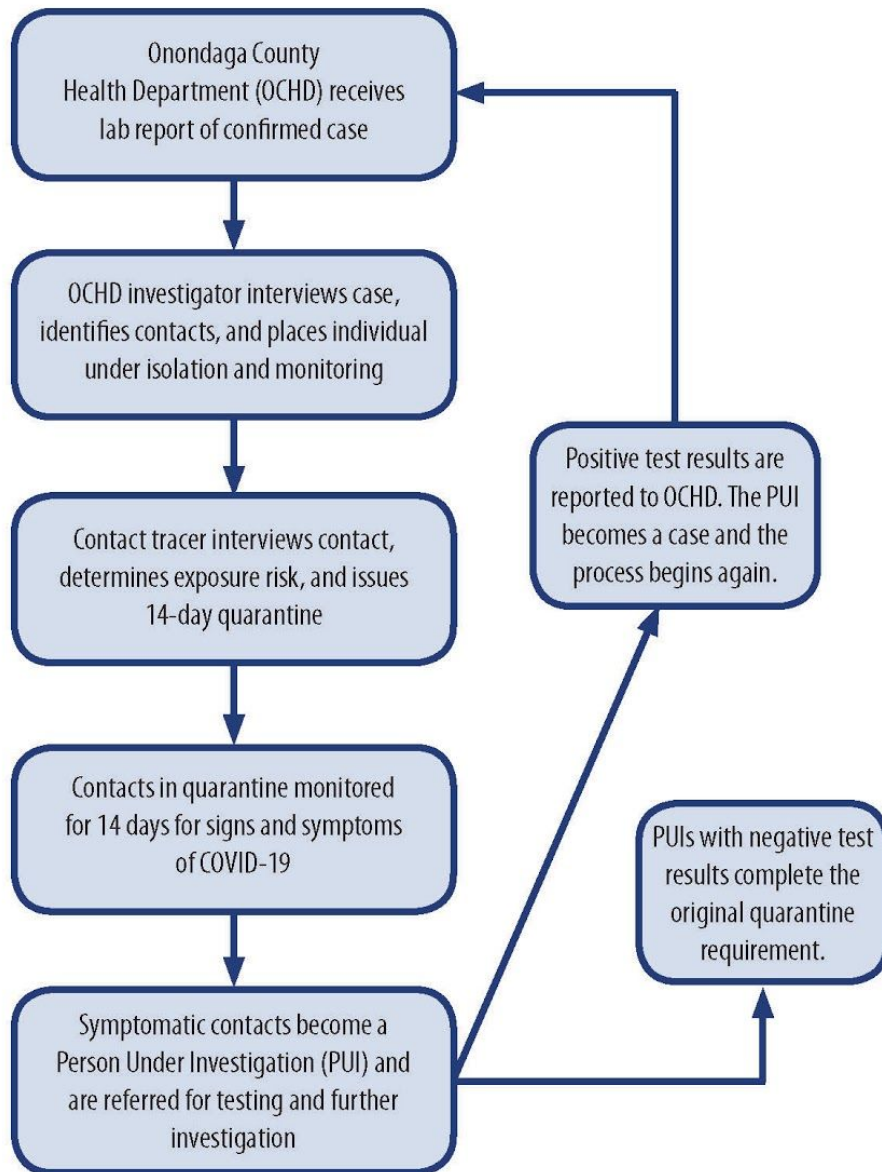
Quarantine Process:

- o Those directed to quarantine will be monitored by contact tracers for signs and symptoms of COVID-19
- o Contacts who develop symptoms become a Person Under Investigation (PUI) and are referred for testing and further investigation
 - ❑ Positive tests reported to OCHD and process begins again
- o Release from quarantine can only be granted by OCHD.

Guidance from Health Department on school closure related to positive cases

- o School closure depends on the rate of infection in the community
- o Closure will occur with the consultation and guidance of OCHD and can vary depending on the situation:
 - ❑ One such example is if there are two separate, and seemingly unrelated, cases in two different classrooms of the same building

ONONDAGA COUNTY HEALTH DEPARTMENT/SCHOOLS COVID-19 Student Contact Monitoring Process



School administration, school health staff, and student support services provide OCHD with information and assistance with investigations upon request.



August 7, 2020